

## Reference List: Industrial Automation | Steel Industry

JANUARY, 2014



## Steel Industry | Ancona – Italy



**Industrial Sector :** Steel Industry  
**Application:** Electric trolley brings  
**Connection date:** 2011  
**Customer:** Emis  
**Products:** Sinus Penta

### Key Notes:

Electric trolley brings conducted with Sinus Penta



## Handling and lifting | Sassoferrato (AN) – Italy



**Industrial Sector :** Steel Industry  
(Handling and lifting)

**Application:** Cranes

**Connection date:** 2010

**Customer:** Emis

**Products:** Sinus Penta

### Key Notes:

EMIS is a sound company with a 10-year long experience in design and manufacturing of lifting and handling equipments, indoor transportation, automation and metal structural works. Because of its dimensions and wide range of products, this high-level manufacturing company provides customers with the technical and business competence required to meet their most specific demands.



## Metal Structures Industry | Callao – Peru



**Industrial Sector :** Steel Industry

**Application:** Cranes

**Connection date:** 2010

**Customer:** Esmetal S.A.C

**Products:** Sinus M



### Key Notes:

Esmetal is the biggest manufacturer of metal structures in Peru.

They work in the mining sector, energy, refinery, infrastructure, trade and industry in general. They are specialized in manufacturing process and storage buildings for mining, on & off shore structures to liquefaction plant and oil refinery, power plants buildings, structures for springs, beam bridges, tanks and boilers.





## Steel Industry | Soacha – Colombia



**Industrial Sector :** Steel Industry

**Application:** Cranes

**Connection date:** 2009

**Customer:** SAC Estructura Metalicas S.A

**Products:**

- Sinus M 7.5HP y 2HP, High Torque

**Type:** Drive + RGN

### Key Notes:

- Engineering sector industry leader in the construction of metal structures for roofing.
- Up to 4 drives to control the motion in master-slave, 1 regenerative drive: when the load goes down the inverter feeds the grid with the energy which will be dissipated on clamps or break resistors



**SAC** ESTRUCTURAS METALICAS S.A.

## Steel Industry | Ontario – Canada



**Industrial Sector :** Steel Industry  
**Application:** Cranes  
**Connection date:** 2009  
**Customer:** Gerdau Ameristeel  
**Products:** Sinus Penta

### Key Notes:

The Santerno inverters allow the full control of the crane ensuring safe operation of it.

The result is smooth, 'Bump-Less' starts and stops and variable speed make positioning of steel ingots easier for the operator.



## Steel Industry | Lima – Peru



**Industrial Sector :** Steel Industry

**Application:** Fan

**Connection date:** 2008

**Customer:** Siderperu, Empresa Siderurgica del Peru S.A.A. (Grupo Gerdau)

**Products:** Sinus Penta 45kW, 440VAC

**Key Notes:** Siderperu is the steel manufacturer's most biggest and prestigious in Peru





## Steel Industry | Ontario – Canada



**Industrial Sector :** Steel Casting

**Application:** Regenerative Crane

**Connection date:** 2008

**Customer:** Fundicion Callao S.A.

**Products:** Sinus Penta

**Type:** Drive + RGN

### Key Notes:

- Fundicion Callao is a foundry with more than 60 years of experience serving the mining, cement, agricultural and minerals processing industry. Our company provides castings as spare parts for all types of machinery, having specialized in the mining and cement industry.
- The SINUS M drives feature the Regenerative function and Fall prevention of connected load. This allows operating under totally safe conditions.

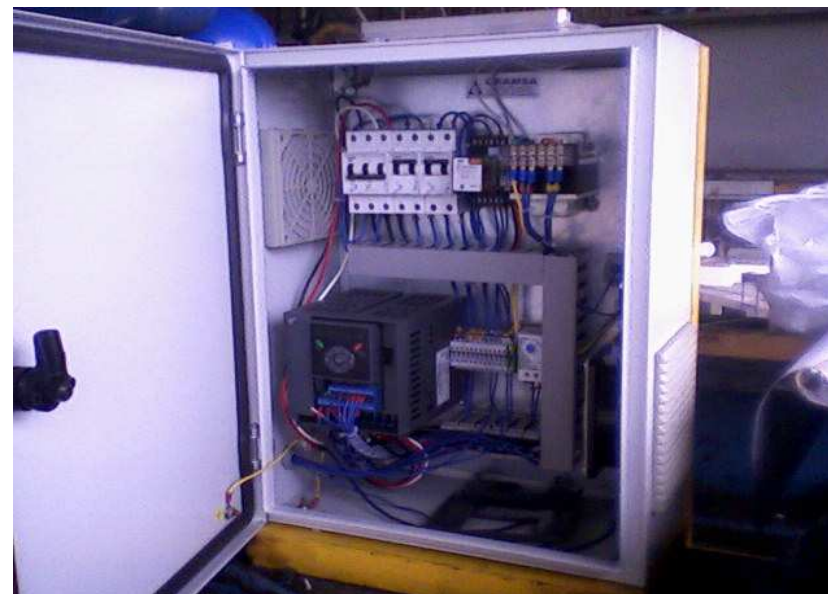




## Steel Industry | Ontario – Canada



**Industrial Sector :** Steel Industry  
**Application:** Cranes  
**Connection date:** 2007  
**Customer:** Corporación Aceros Arequipa S.A  
**Products:** Sinus M  
**Key Notes:** Steel producers



## Magnetic Lifting | Brescia – Italy



**Industrial Sector :** Steel Industry

**Application:** Magnetization and demagnetization electromagnets

**Connection date:** 2007

**Customer:** SGM Gantry SpA

**Products:** Sinus Penta from 5,5 kw to 75kw  
AC-DC converters DCREG4

### Key Notes:

- SGM has continuously been developing its magnetic equipment technology by closely working with and being highly sensitive to the needs of steel mills all over the world. This close relationship with the steel industry has permitted SGM to become a leader in lifting magnets and magnetic separation equipment.
- Steel bridge cranes with lifting electromagnets equipped with AC-DC mod. DCREG



## Conveyor | Shaanxi Tongchuan Cuijiagou Coal Mine – China



- Industrial Sector :** Steel Industry
- Application:** Conveyor Belt
- Connection date:** 2007
- Customer:** Shaanxi Tongchuan Cuijiagou Coal Mine
- Products:** Sinus Penta RGN
- Type:** Drive + RGN
- Key Notes:**
- Transport the coal on two 1000m long belts at 5m/s from the mine to surface.





[santerno.com](http://santerno.com)

JANUARY, 2014

