

# REFERENCES

<b>Industrial Sector:</b>	<b>Cement</b>
<b>Application:</b>	Mill
<b>Products:</b>	Soft Starter ASAMV 200-07-E2
<b>Connection date:</b>	2006
<b>Customer:</b>	Cementi Costantinopoli s.r.l.

**Key Notes:** Cement Constantinople S.r.l. operates in the following activities:

- pozzolan extraction at the quarry property
- extraction of limestone from the quarry property
- extraction of clay from the quarry property
- production of clinker with a microwave tower with a 5-stage precalciner;
- production of cement binders;
- production and sale of ready-mix concrete;
- Transport



# Cement Industry | Spoleto - Italy



<b>Industrial Sector:</b>	<b>Cement</b>
<b>Application:</b>	Fan
<b>Inverters:</b>	Soft Starter ASAMV 200-07-E2
<b>Connection date:</b>	2008
<b>Customer:</b>	CEMENTIR Italia s.r.l.

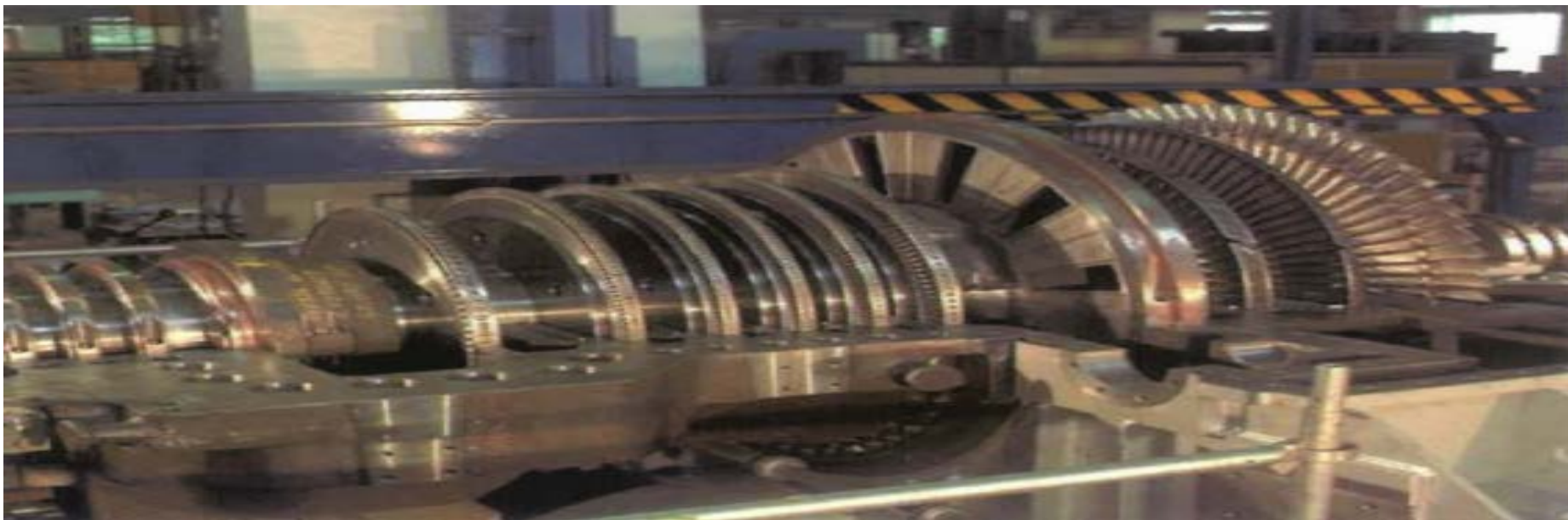
**Key Notes:** Cementir Italy is one of the leading producers of cement and concrete in Italy. The company is controlled by Cementir Holding SpA, which operates internationally in the field of building materials

- Santerno soft starter, HVAC applicated, provides a complete range of motor and system protection features.



<b>Industrial Sector:</b>	<b>Oil &amp; Gas</b>
<b>Application:</b>	Test Bench for Gas Turbines
<b>Products:</b>	Soft Starter ASAMV 400-07-E2
<b>Connection date:</b>	2008
<b>Customer:</b>	Nuovo Pignone GE

**Key Notes:** ORegen - Waste Heat Recovery: At locations where remote operation, water scarcity and widely variable loads are important issues, capturing gas turbines' waste heat using the ORegen™ system is an efficient and effective choice to generate additional power without additional fuel consumption and associated CO2 emissions. The ORegen™ system is capable of generating electricity at lower gas turbine loads than a standard combined cycle system where water and steam are used to recover waste heat



# Water Treatment | Mexico City - Mexico



**Industrial Sector:** **Water Treatment**

**Application:** Pumps

**Inverters:** Soft Starter ASAMV 200-07-E2

**Connection date:** 2010

**Customer:** Water Treatment Company

## Key Notes:

Power : 2000kW  
Voltage : 6000-7200Vac  
Current : 200 A



# Water | Sao Paulo - Brazil



**Industrial Sector:** **Water**

**Application:** Water Pump

**Connection date:** 2011

**Customer:** Sanasa Sao Paulo

**Inverters quantity:** 12 units of ASAMV Cabinet 400 02  
E2 00

## Key Notes:

Power : 1500 HP  
Voltage : 2300 Vac  
Current : 400 A



[www.santerno.com](http://www.santerno.com)